

**2**

$^{13}\text{C}$ , 126 MHz,  $\text{CDCl}_3$

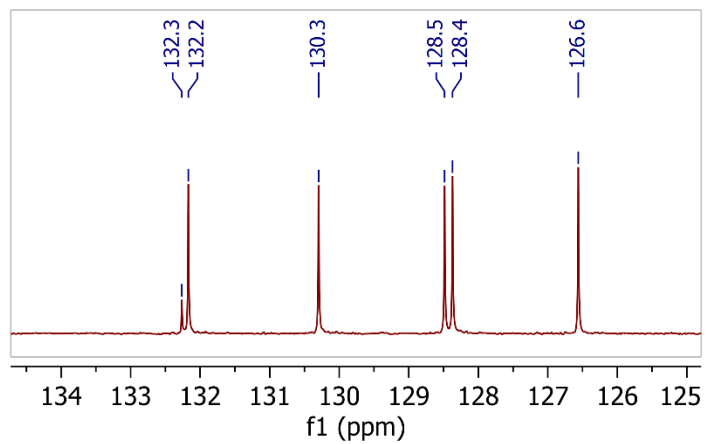
—169.0

135.4  
132.3  
132.2  
130.3  
128.5  
128.4  
126.6  
121.5

—94.7

77.4  $\text{CDCl}_3$   
77.2  $\text{CDCl}_3$   
77.2  $\text{CDCl}_3$   
76.9  $\text{CDCl}_3$

—21.5



200 190 180 170 160 150 140 130 120 110 100 90 80 70 60 50 40 30 20 -10 -20

f1 (ppm)